





Derby Road, Hoddesdon, EN11 0BG

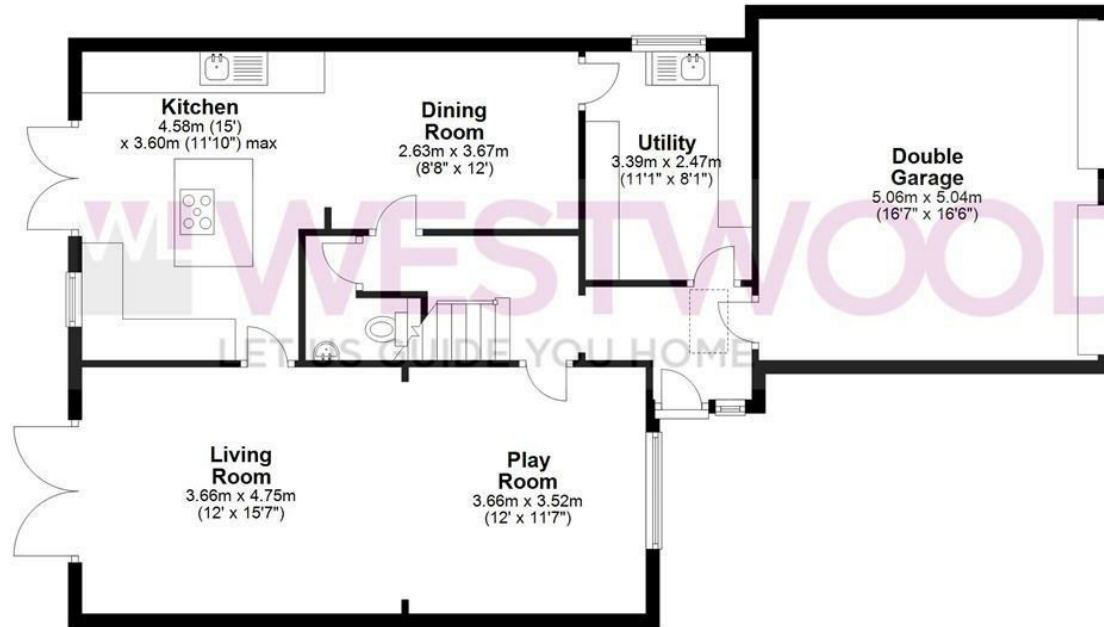
**** VENDORS SUITED **** Westwood Leber are delighted to bring to the market this deceptively spacious four bedroom detached family home located on this private Road in Dobbs Weir. This well presented property benefits from large ground floor accommodation comprising a utility room, w/c, large living room and a well sized kitchen / dining room leading out to a private rear garden. On the first floor there is a large master bedroom with en-suite, family bathroom and three further bedrooms. The front of the property is particularly impressive offering a large front driveway and fantastic double garage with internal access.



 WESTWOODLEBER

Ground Floor

Approx. 103.8 sq. metres (1117.7 sq. feet)



First Floor

Approx. 57.4 sq. metres (617.7 sq. feet)



Total area: approx. 161.2 sq. metres (1735.4 sq. feet)

FOR ILLUSTRATIVE PURPOSES ONLY. NOT TO SCALE. Whilst every attempt had been made to ensure the accuracy of the floor plan shown, all measurements, positioning, fixtures, features, fittings and any other data shown are an approximate interpretation for illustrative purposes only and are not to scale. No responsibility is taken for any error, omission, miss-statement or use of data shown. Property marketing provided by Westwood Leber.
Plan produced using PlanUp.











WL WESTWOODLEBER

WL WESTWOODLEBER
LET US GUIDE YOU HOME